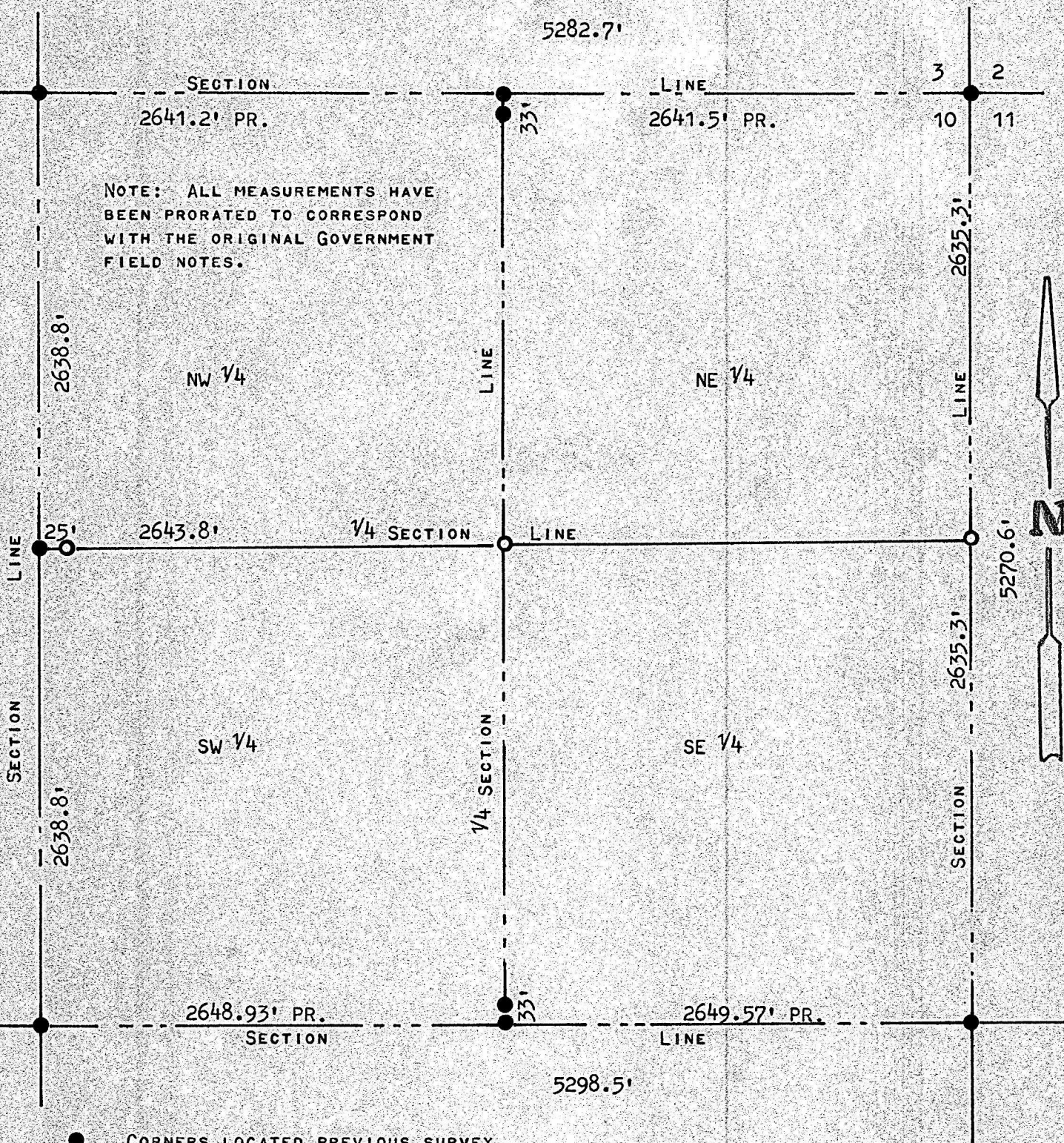


A SURVEY OF SECTION 10, T19S-R4W
SECTION 10, McPHERSON, KANSAS
McPHERSON COUNTY, KANSAS



- CORNERS LOCATED PREVIOUS SURVEY
- PINS SET THIS SURVEY

STATE OF KANSAS)
COUNTY OF MCPHERSON) SS

I, F. R. RANKIN, COUNTY ENGINEER OF MCPHERSON COUNTY, KANSAS, DO HEREBY CERTIFY THAT UNDER MY SUPERVISION A SURVEY WAS MADE OF SECTION 10, T19S-R4W OF THE 6TH P.M. TO ESTABLISH THE 1/4 SECTION LINE BETWEEN THE NW 1/4 AND THE SW 1/4, SECTION 10, T19S-R4W, AND THE ABOVE PLAT IS A TRUE EXHIBIT OF SAID SURVEY AS FAR AS IT IS KNOWN TO ME.

SURVEY CALLED FOR BY JEFF KUBIN

SIGNED THIS 11th DAY OF AUGUST, 1971

F. R. Rankin
F. R. RANKIN
COUNTY ENGINEER
MCPHERSON COUNTY, KANSAS



MICROFILM