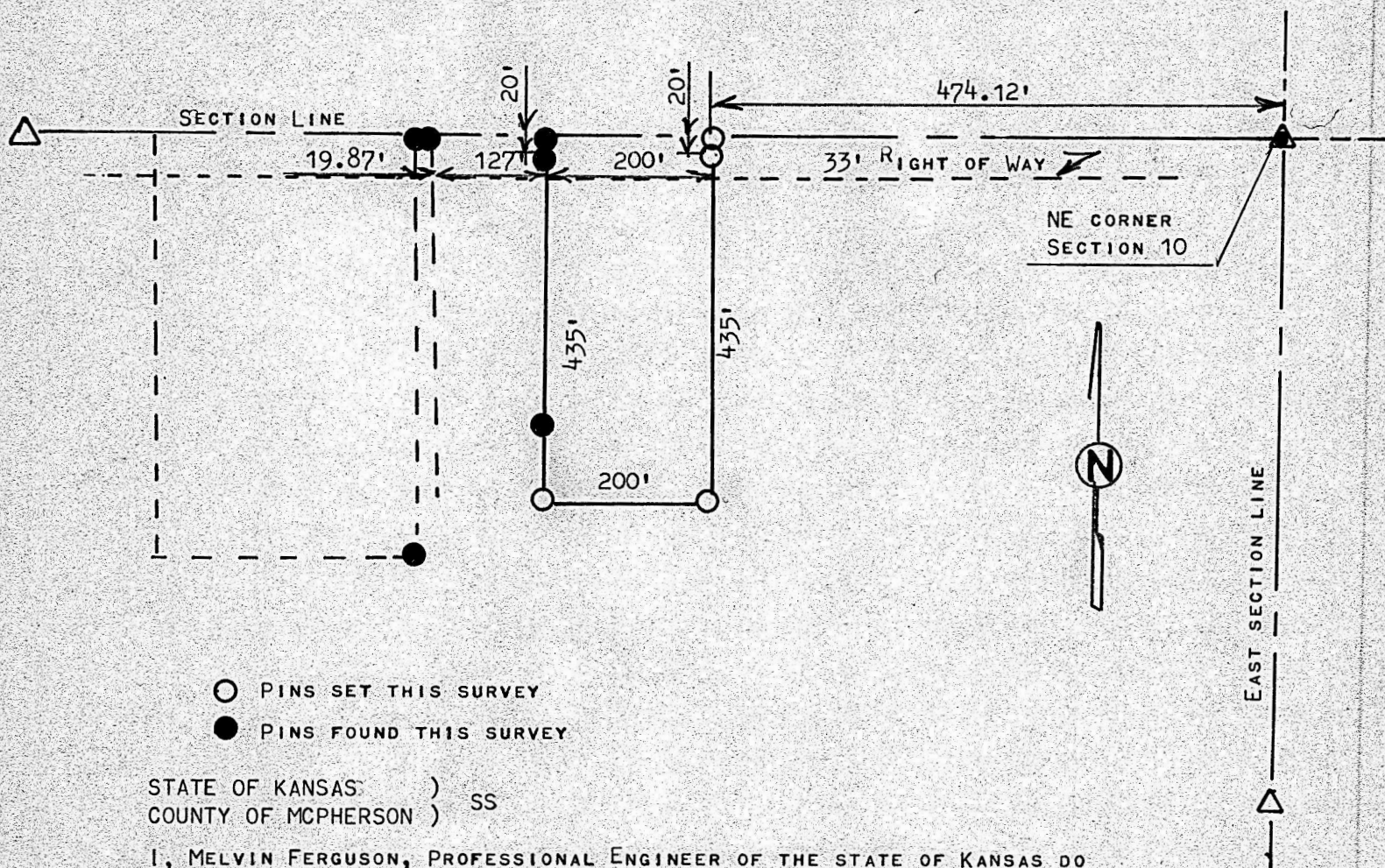


A SURVEY OF A TRACT OF LAND IN THE
NE 1/4, SECTION 10, T19S R3W
MCPHERSON COUNTY, KANSAS



STATE OF KANSAS)
COUNTY OF MCPHERSON) SS

I, MELVIN FERGUSON, PROFESSIONAL ENGINEER OF THE STATE OF KANSAS DO
HEREBY CERTIFY THAT UNDER MY SUPERVISION A SURVEY WAS MADE IN THE NE 1/4,
SECTION 10, T19S, R3W OF THE 6TH P.M. AND DESCRIBED AS FOLLOWS;

BEGINNING 474.12 FEET WEST OF THE NE CORNER OF SAID NE1/4, SECTION 10, T19S,
R3W, FOR PLACE OF BEGINNING; THENCE ON WEST ON SECTION LINE 200 FEET; THENCE
SOUTH PARALLEL WITH EAST SECTION LINE 435 FEET; THENCE EAST PARALLEL WITH NORTH
SECTION LINE 200 FEET; THENCE NORTH 435 FEET AND TO SECTION LINE, SAID TRACT OF
CONTAINS 2.0 ACRES MORE OR LESS, AND THAT THE ACCOMPANYING PLAT IS A TRUE
EXHIBIT OF SAID SURVEY AS FAR AS IT IS KNOWN TO ME.

SURVEY CALLED FOR BY DON RUSH

SIGNED THIS 21st DAY OF APRIL, 1981
MELVIN FERGUSON
PROFESSIONAL ENGINEER
MCPHERSON, KANSAS

