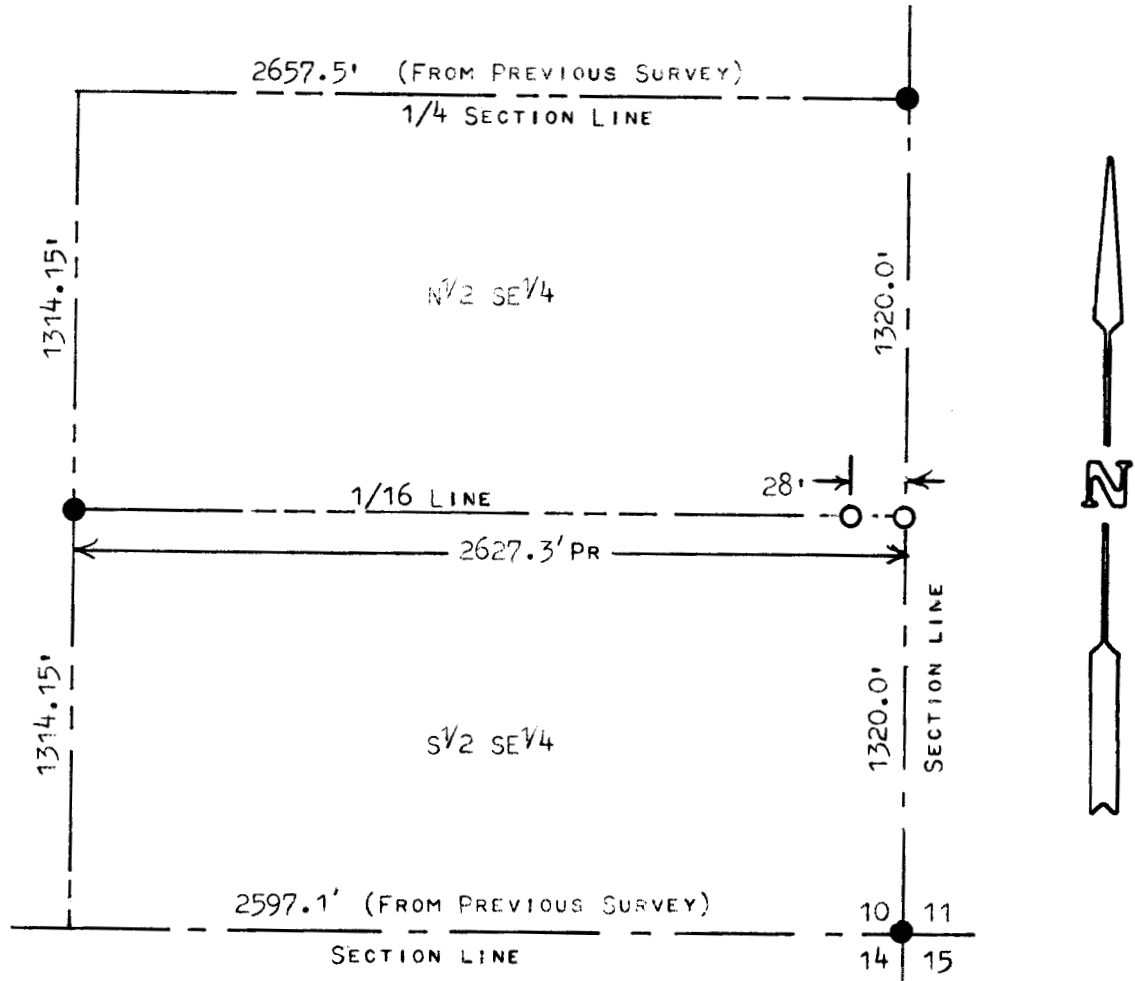


A SURVEY OF THE  
SOUTH LINE OF THE N<sup>1</sup>/<sub>2</sub>,  
SE<sup>1</sup>/<sub>4</sub>, SECTION 10, T19S, R2W,  
McPHERSON COUNTY, KANSAS



- PINS FOUND THIS SURVEY
- PINS SET THIS SURVEY

STATE OF KANSAS )  
COUNTY OF MCPHERSON ) SS

I, MELVIN FERGUSON, COUNTY ENGINEER, MCPHERSON COUNTY, KANSAS,  
DO HEREBY CERTIFY THAT UNDER MY SUPERVISION A SURVEY WAS MADE OF  
THE SOUTH LINE OF THE N<sup>1</sup>/<sub>2</sub>, SE<sup>1</sup>/<sub>4</sub>, SECTION 10, T19S, R2W, MCPHERSON  
COUNTY, KANSAS AND THE ABOVE PLAT IS A TRUE EXHIBIT OF SAID SURVEY  
AS FAR AS IT IS KNOWN TO ME.

SURVEY CALLED FOR BY WILMA HOWERTON.

SIGNED THIS 1 DAY OF APRIL 1975.

MELVIN FERGUSON  
COUNTY ENGINEER  
MCPHERSON COUNTY

