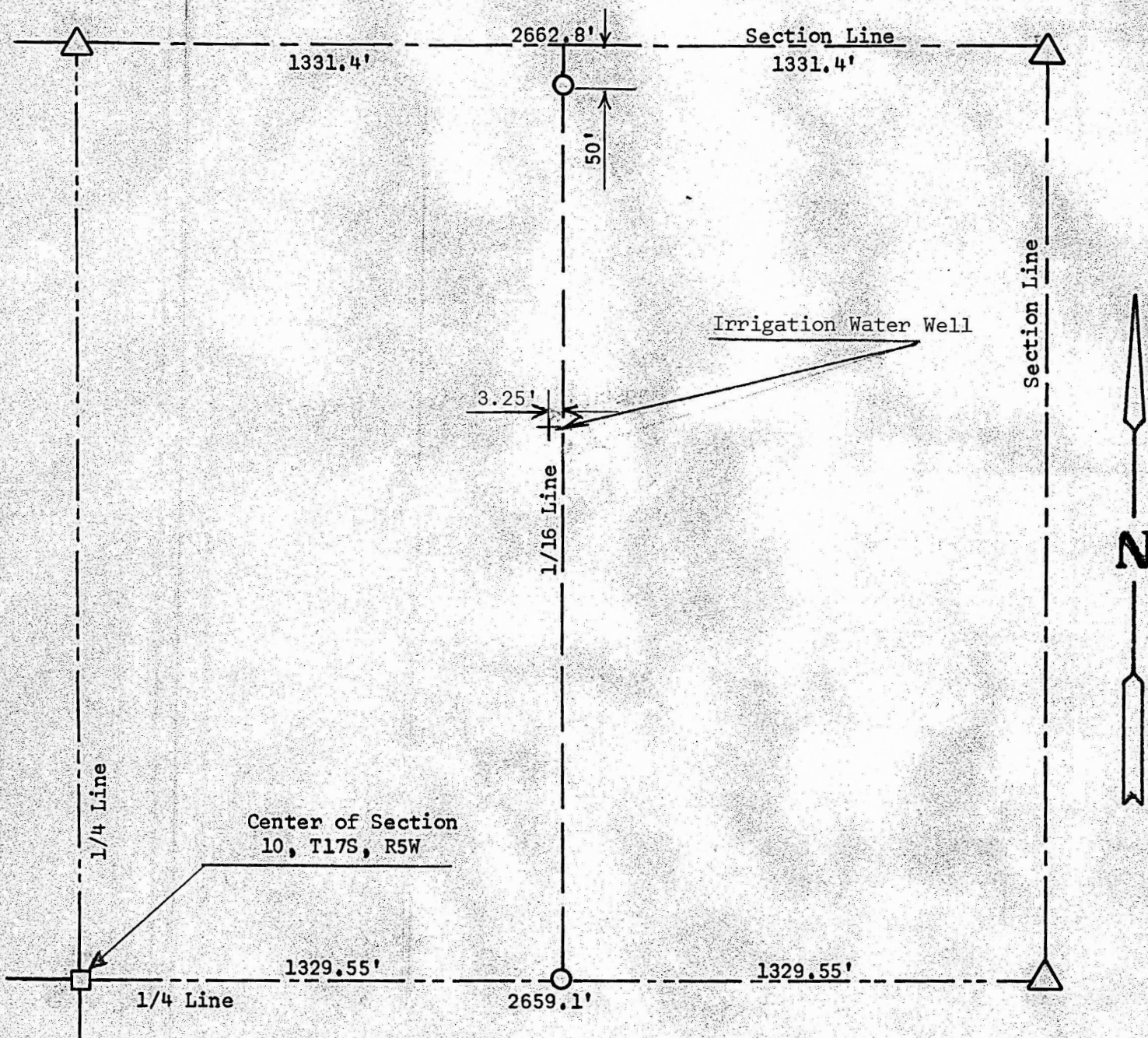


A SURVEY OF SECTION 10, T17S, R5W
MC PHERSON COUNTY, KANSAS



- Pins Set This Survey
- Corner Stone Found
- △ Established by U. S. Government

State of Kansas)
County of McPherson) SS

I, Melvin Ferguson, County Engineer of McPherson County, Kansas do hereby certify that a survey was made of the West 1/2 of the Northeast 1/4 of Section 10, T17S, R5W of the 6th P.M. The above plat is a true exhibit of said survey as far as it is known to me.

Survey called for by Lucille Lindh

Signed this 20th day of May, 1974

Melvin Ferguson
Melvin Ferguson, P. E.
County Engineer
McPherson County, Kansas

