



Garber Surveying Service, P.A.

2908 North Plum St.
Hutchinson, Kansas 67502
Phone 620 665-7032 • FAX 620 663-7401

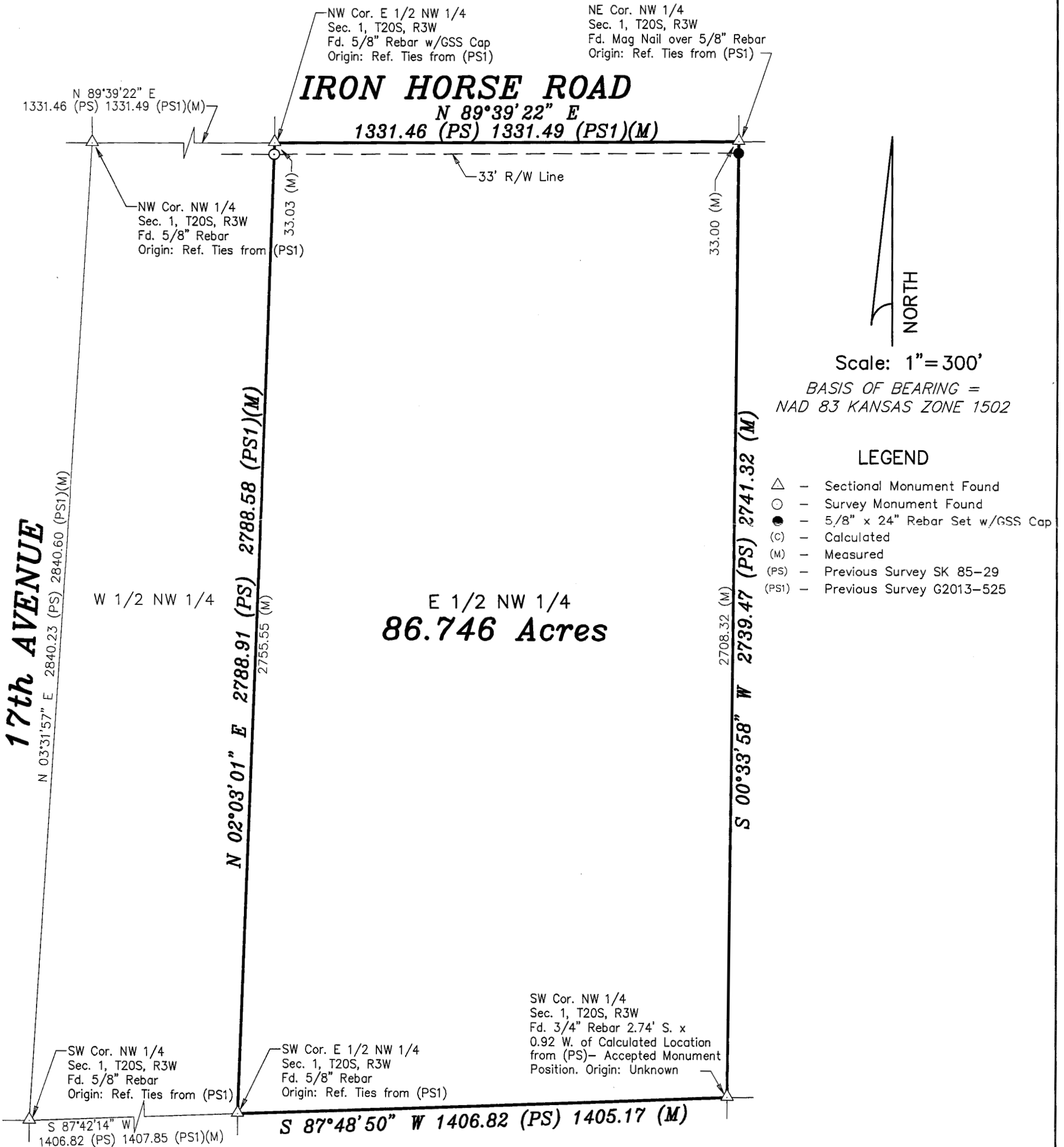
511 North Poplar St.
Newton, Kansas 67114
Phone 316 283-5053 • FAX 316 283-5073

115 East Marlin
McPherson, Kansas 67460
Phone 620 241-4441 • FAX 620 241-4458

Project No. G2015-59

SURVEY FOR: STACY KAUFMAN

DESCRIPTION: The East Half of the Northwest Quarter of Section 1, Township 20 South, Range 3 West of the 6th Principal Meridian, McPherson County, Kansas.



Scale: 1" = 300'
BASIS OF BEARING =
NAD 83 KANSAS ZONE 1502

LEGEND

- △ - Sectional Monument Found
- - Survey Monument Found
- - 5/8" x 24" Rebar Set w/GSS Cap
- (C) - Calculated
- (M) - Measured
- (PS) - Previous Survey SK 85-29
- (PS1) - Previous Survey G2013-525

DATE OF FIELD WORK: Jan. 30, 2015

SURVEYOR'S CERTIFICATE:

I hereby certify this plat to be a true, correct and complete representation of the property described above as surveyed under my supervision.
Dated: Feb. 4, 2015

Copyright © 2015 Garber Surveying Service, P.A.

Nicholas D. Schmidt, L.S. #1492
2/4/15