

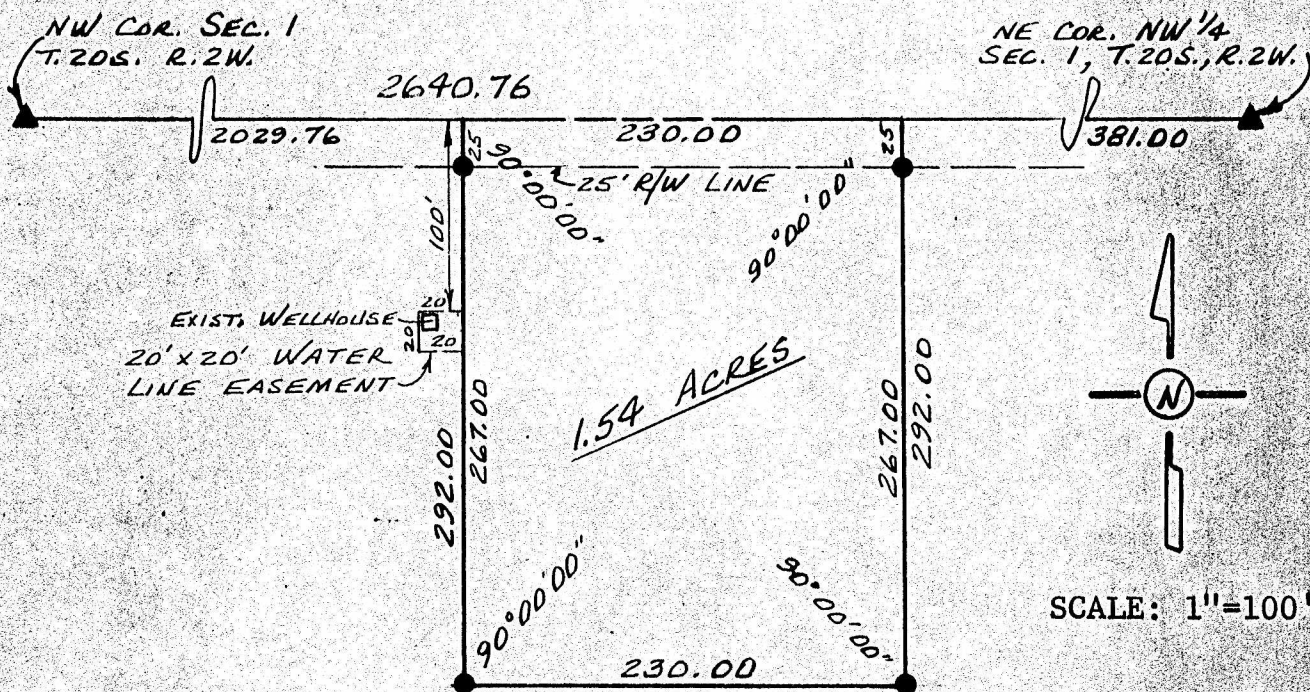
Survey for: Bud Anderson

By: Garber Surveying Service, P.A.

217 East First Avenue, Suite 9

Hutchinson, Kansas 67501

DESCRIPTION: A tract in the Northwest quarter (NW $\frac{1}{4}$) of Section 1, Township 20 South, Range 2 West of the Sixth Principal Meridian as more particularly described on the attached sheet.

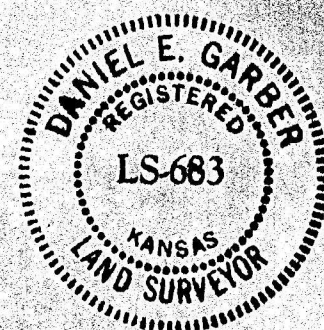


Note: The NE and NW corners of the NW $\frac{1}{4}$ of Section 1, T20S, R2W of the 6th P.M. were reset by prorating the distances between the NE corner of said Section 1 and the NW corner of the NE $\frac{1}{4}$ of Section 3, T20S, R2W of the 6th P.M. Total distance measured was 13,203.79 ft.

- ▲ -Section subdivision corner set.
- -5/8" x 24" iron rebar set.

I hereby certify this plat to be a true, correct and complete representation of the property described above and on the attached sheet, as surveyed by me, this 21st day of July, 1982.

Daniel E. Garber
Daniel E. Garber RLS



G82-84