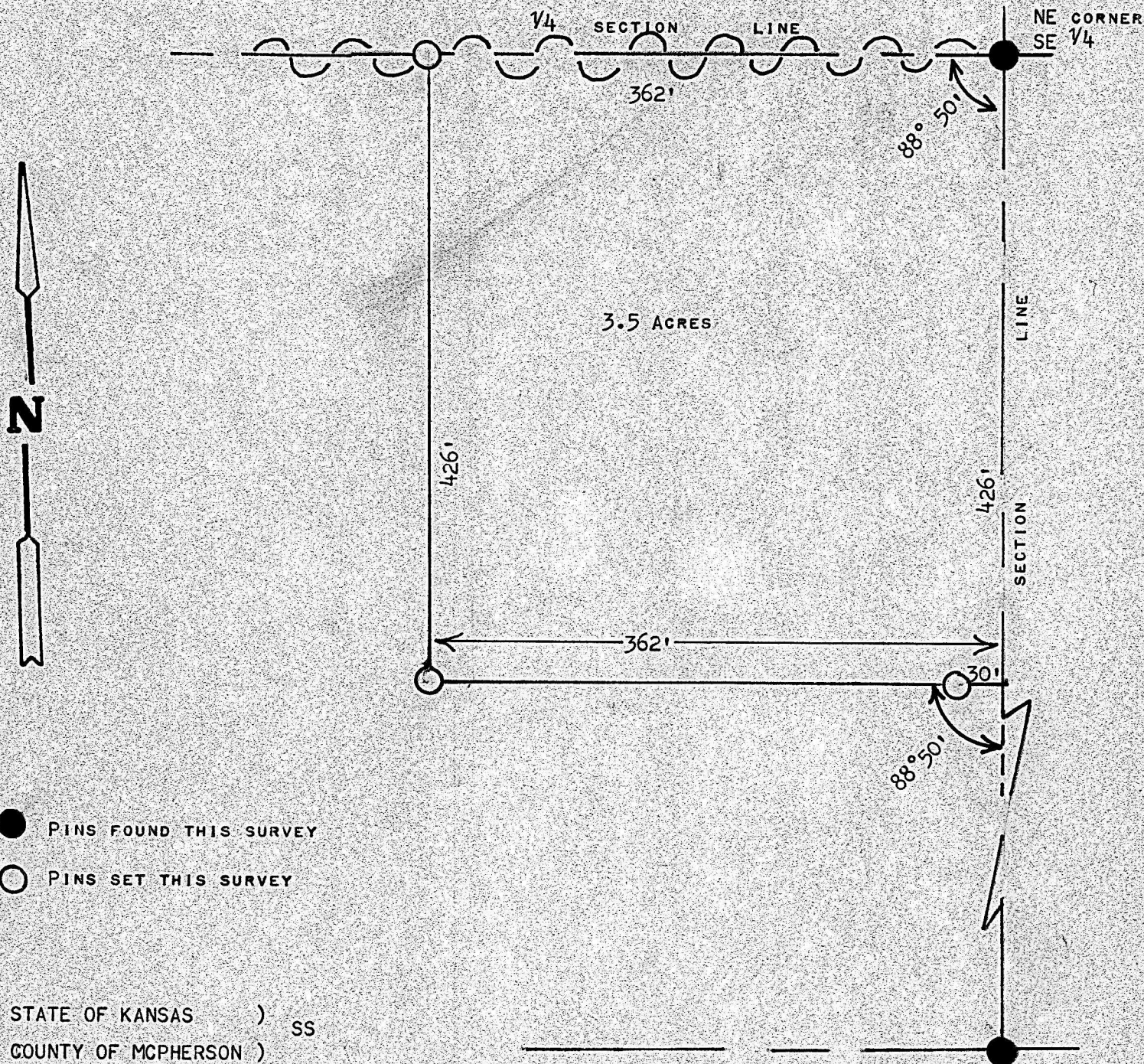


A SURVEY OF A TRACT OF LAND IN THE SE  $\frac{1}{4}$  OF  
SECTION 1, T20S-R2W, MCPHERSON COUNTY, KANSAS



*Francis Rankin*  
FRANCIS RANKIN  
COUNTY ENGINEER  
MCPHERSON COUNTY, KANSAS



MICROFILM