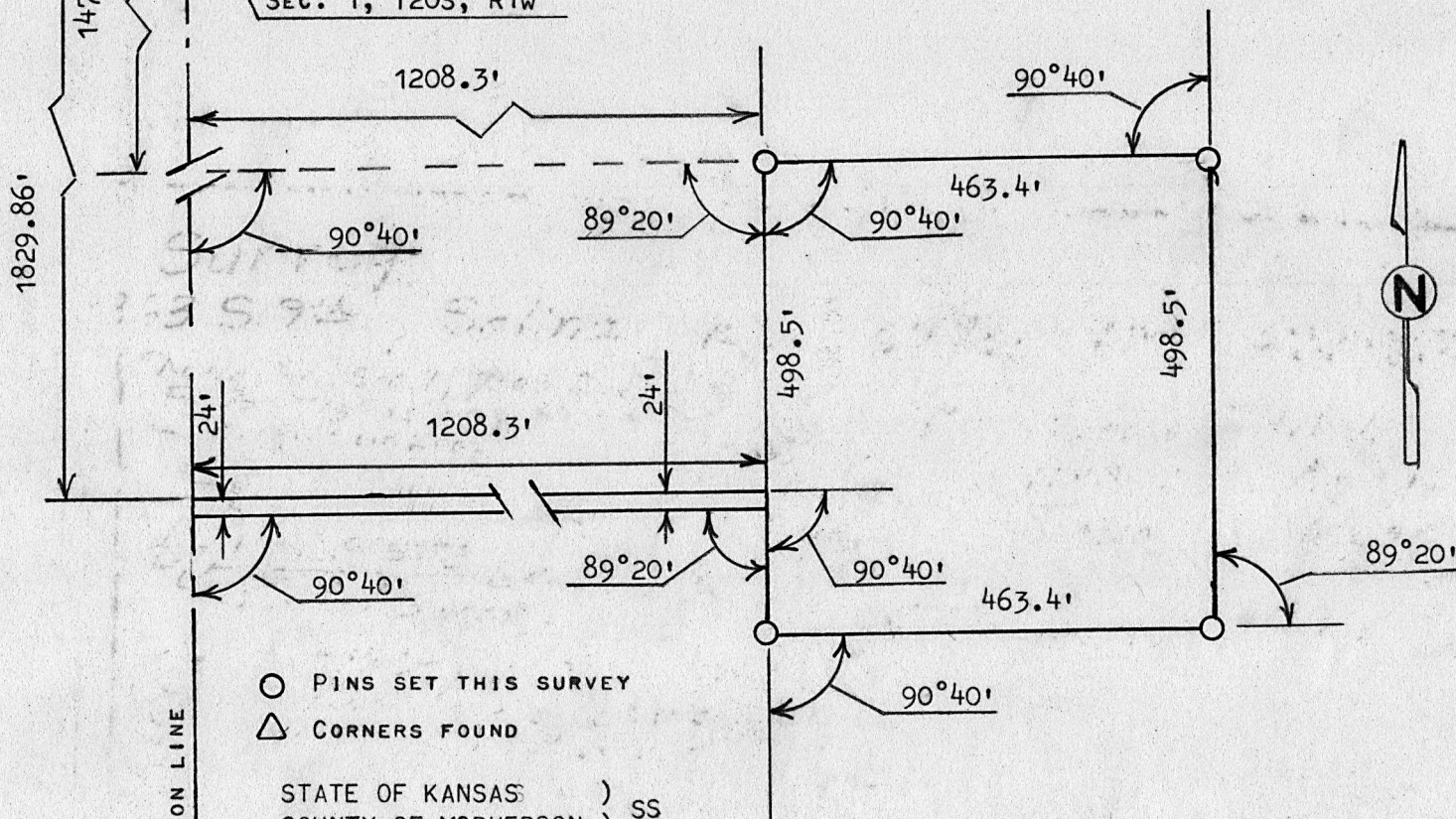


NW1/4, SECTION 1, T20S, R1W
MCPHERSON COUNTY, KANSAS

NW CORNER OF NW1/4
SEC. 1, T20S, R1W



○ PINS SET THIS SURVEY
△ CORNERS FOUND

STATE OF KANSAS)
COUNTY OF MCPHERSON) SS

I, MELVIN FERGUSON, PROFESSIONAL ENGINEER OF THE STATE OF KANSAS DO
HEREBY CERTIFY THAT UNDER MY SUPERVISION A SURVEY WAS MADE IN THE
NW1/4, SECTION 1, T20S, R1W OF THE 6TH P.M. AND DESCRIBED AS FOLLOWS;

COMMENCING AT THE NW CORNER OF THE NW1/4, SECTION 1, T20S, R1W OF THE 6TH P.M.; THENCE SOUTH ALONG SECTION LINE 1478.36 FEET, AND WITH A DEFLECTION ANGLE OF 90°40' LEFT, EAST A DISTANCE OF 1208.3 FEET FOR PLACE OF BEGINNING; THENCE WITH A DEFLECTION ANGLE 90°40' RIGHT, SOUTH A DISTANCE OF 498.5 FEET, AND ALSO PARALLEL WITH SECTION LINE; THENCE DEFLECTION ANGLE 90°40' LEFT, EAST A DISTANCE OF 463.4 FEET; THENCE DEFLECTION ANGLE 89°20' LEFT, NORTH A DISTANCE OF 498.5 FEET, AND ALSO PARALLEL WITH SECTION LINE; THENCE DEFLECTION ANGLE 90°40' LEFT, WEST A DISTANCE OF 463.4 FEET, AND TO THE PLACE OF BEGINNING, SAID TRACT OF LAND CONTAINS 5.3 ACRES MORE OR LESS.

DESCRIPTION OF 24 FEET OF INGRESS AND EGRESS EASEMENT

A 24 FEET EASEMENT FOR THE RIGHT OF INGRESS AND EGRESS IN THE NW1/4,
SECTION 1, T20S, R1W OF THE 6TH P.M. AND DESCRIBED AS FOLLOWS;

COMMENCING AT THE NW CORNER OF THE NW1/4, SECTION 1, T20S, R1W OF THE 6TH P.M.; THENCE SOUTH ALONG SECTION LINE 1829.86 FEET FOR PLACE OF BEGINNING; THENCE DEFLECTION ANGLE 90°40' LEFT, EAST A DISTANCE OF 1208.3 FEET; THENCE DEFLECTION ANGLE 90°40' RIGHT, SOUTH A DISTANCE OF