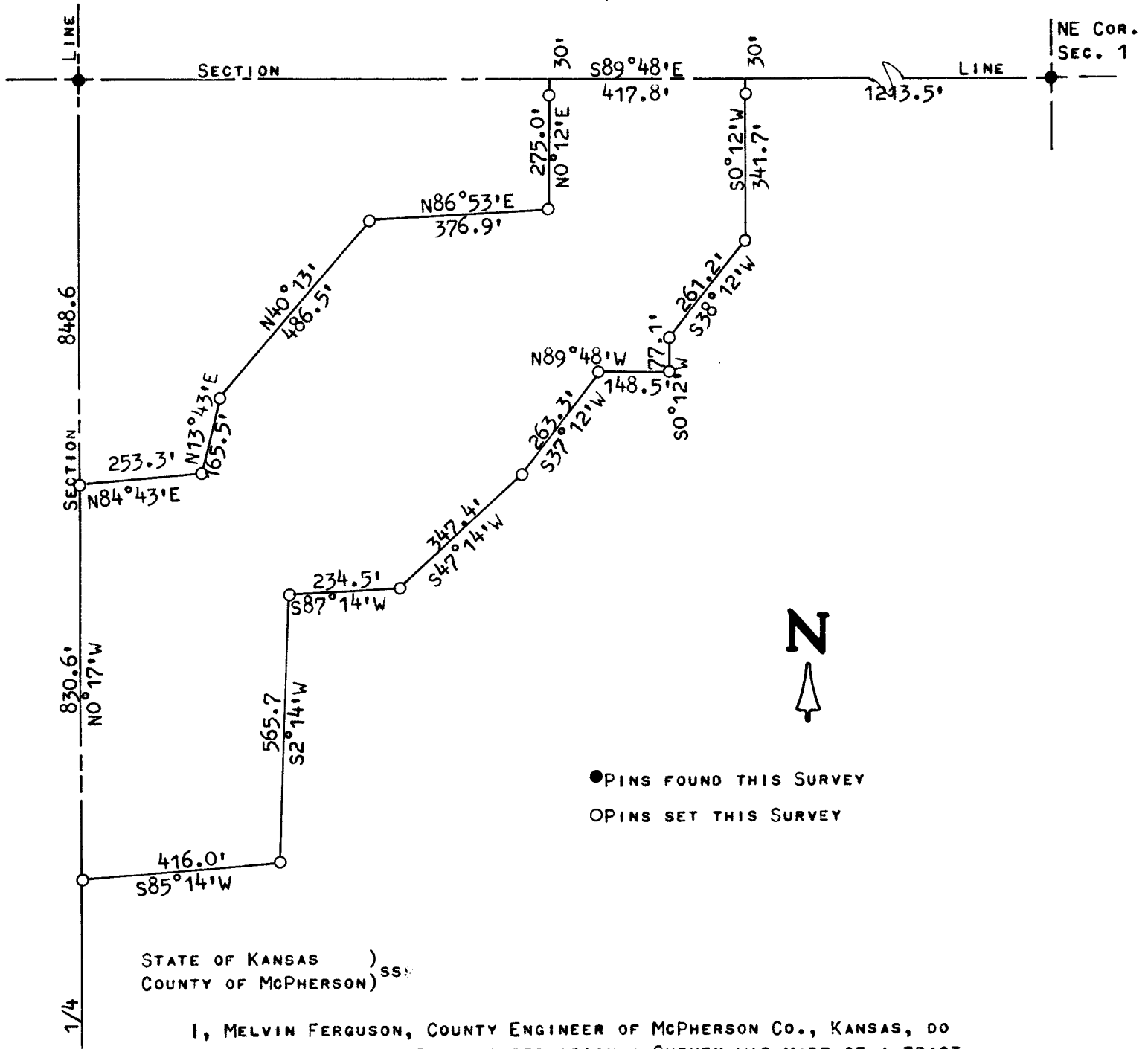


A SURVEY IN THE NE1/4 OF SECTION 1,

T18S - R5W

McPHERSON CO., KANSAS



I, MELVIN FERGUSON, COUNTY ENGINEER OF McPHERSON CO., KANSAS, DO HEREBY CERTIFY THAT UNDER MY SUPERVISION A SURVEY WAS MADE OF A TRACT OF LAND IN THE NE1/4 OF SECTION 1, T18S - R5W OF THE 6TH P.M. AND DESCRIBED AS FOLLOWS:

BEGINNING ON SECTION LINE, 1213.5 FEET WEST OF THE NE CORNER OF SAID SECTION 1, T18S - R5W; THENCE SOUTH 0°12' WEST, 341.7 FEET; THENCE SOUTH 38°12' WEST, 261.2 FEET; THENCE SOUTH 0°12' WEST, 77.1 FEET; THENCE NORTH 89°48' WEST, 148.5 FEET; THENCE SOUTH 37°12' WEST, 263.3 FEET; THENCE SOUTH 47°14' WEST, 347.4 FEET; THENCE SOUTH 87°14' WEST, 234.5 FEET; THENCE SOUTH 2°14' WEST, 565.7 FEET; THENCE SOUTH 85°14' WEST, 416.0 FEET, TO THE 1/4 SECTION LINE; THENCE NORTH 0°17' WEST ON THE 1/4 SECTION LINE, 830.6 FEET; THENCE NORTH 84°43' EAST, 253.3 FEET; THENCE NORTH 13°43' EAST, 165.5 FEET; THENCE NORTH 40°13' EAST, 486.5 FEET; THENCE NORTH 86°53' EAST, 376.9 FEET; THENCE NORTH 0°12' EAST, 275.0 FEET, TO THE SECTION LINE; THENCE EAST ON SECTION LINE 417.8 FEET TO THE POINT OF BEGINNING. SAID TRACT CONTAINS 23.4 ACRES MORE OR LESS.

I ALSO CERTIFY THAT THE ABOVE PLAT IS A TRUE EXHIBIT OF SAID SURVEY AS FAR AS IT IS KNOWN TO ME.

SURVEY CALLED FOR BY MARQUETTE FARMERS STATE BANK.

SIGNED ON THIS 30<sup>th</sup> DAY OF OCTOBER, 1974.

MELVIN FERGUSON  
COUNTY ENGINEER  
McPHERSON, KANSAS

MELVIN V. FERGUSON  
LICENSED  
KANSAS  
PROFESSIONAL ENGINEER  
6772